



www.se-arch.com

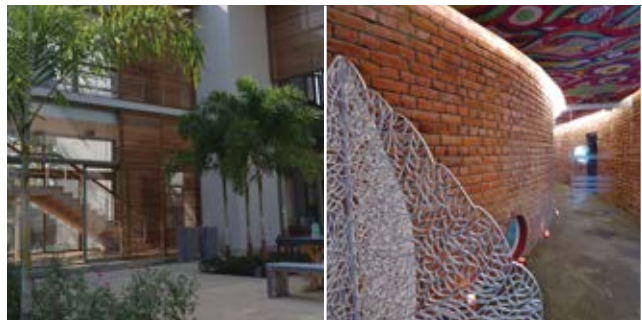


SEARCH is that quest, which aims to draw out the essence of a place; it's *genus loci*. To discover unique, distinguishing qualities that make a place, the site, soothingly special. A habitat. An endless journey through diverse histories with constant inspiration from our enveloping environment.

The Studio

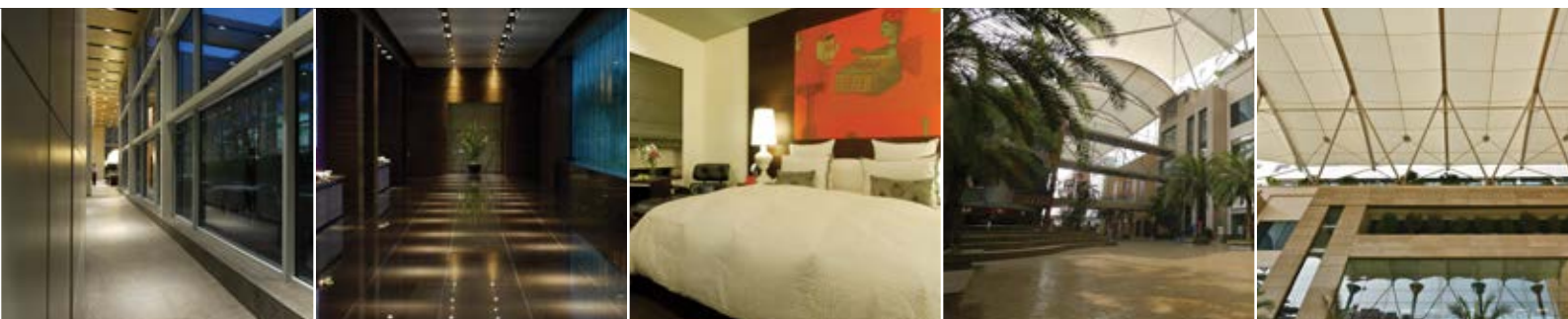
is where we [meditate and] pre-meditate specific outcomes across the scales, from furniture, interior rooms to Architecture and Master planning. We strive FOR an enriching **ARCHITECTURE**, with a responsible design ethic that not only belongs but also enhances its **ENVIRONMENT**.





Architecture Master Planning Interior Design

STUDIO FOR ENVIRONMENT & ARCHITECTURE (SEARCH) is dedicated to providing comprehensive visions for spaces, which makes them instantly livable. A partnership founded by Kapil Bhalla and Jayashree Darda Bhalla in 1990, SEARCH has earned a reputation for exceptional, innovative design strategies that result in a highly personalized service. The wide array of services ensures a multidisciplinary approach and guarantees exceptional quality along with all-round sustainability.





KAPIL BHALLA

Founder and Principal Architect

Bachelor Of Architecture, (1985)

Sir J.J. College of Architecture, Mumbai

Master Of Architecture, (1987)

University of Illinois at Urbana Champaign, USA

Executive Education

Graduate School Of Design, (2008)

Harvard University, Boston, Massachusetts, USA

Kapil Bhalla, as Principal Architect and planner, enjoys the challenges posed by the diverse nature of his profession. This produces an architecture that creates places; which enrich the way people live, work, play and heal. A deep interest in Frank Lloyd Wright's work drew him to Midwest America, from where he obtained his Masters in Architecture from the University of Illinois, Urbana Champaign. Together with Jayashree Darda Bhalla, he founded SEARCH on the bedrock of academic brilliance. Kapil has wide ranging interests; his attention to detail and exceptional time management skills resulted in the growth of the architectural practice with repeating clientele. It is upon this relationship with clients in which he places his trust and confidence and therefore respects religiously. Kapil instills within each and every person associated with SEARCH, direction, guidance, integrity and above all, accountability.



JAYASHREE DARDA BHALLA

Founder and Principal Architect

Bachelor Of Architecture (1985)

Sir J.J. College of Architecture, Mumbai

Master of landscape architecture (1989)

University of Illinois at Urbana - Champaign, USA

Executive Education

Graduate School Of Design, (2006)

Harvard University, Boston, Massachusetts, USA

Jayashree is a nationally acclaimed Landscape Architect; her mantra, 'Design with nature' emphasizes on our symbiosis with the environment and hence sunlight, a gentle breeze, breathtaking views and traditional Indian wisdom are an integral part of SEARCH's design ethic. Jayashree rigorously enforces design values in the interest of Purpose and People and infuses them into the entire development of a project from start to, exquisite finish. She brings to the firm 25 years of experience in design development and space planning and she continues to be invited to conduct workshops and give talks at various seminars and symposia. She is a recipient of the International Federation of Landscape Architects Award and the American Society of Landscape Architecture Award, while a graduate student at the University of Illinois, Urbana Champaign.

Leadership

SEARCH is regulated with a team of energetic leaders from well-established education backgrounds that showcase a multitude of talent and genuine creativity. It is true professionalism that drives them to maintain strict schedules, communicate and coordinate all relevant information and maintain healthy relationships with the clients, consultants and contractors. Their sense of camaraderie and team leadership

skills strengthens bonds within the studio, which results in a positive working environment and ensures a high quality of work output. Along with precision, a great attention to detail and valuable market knowledge make certain of a holistic outlook. It is this ability to take on and distribute responsibility that facilitates SEARCH to perform as one single coherent unit.



Swamy Sir



Prashant



Amey



Mithilesh



Huzefa



Akarsh



Poorna



Priyanka



Architecture

Architecture extends itself beyond the purpose of shelter. It defines cultures and punctuates history; it is the art within which people live, work, play and recover. It has to be inherently beautiful. This requires an ultimate sense of responsibility, which critically defines the boundary between potential and misuse. SEARCH strives to maintain this restraint whilst using constant innovation to curve along with the complexities, to produce an architecture that is visually simple yet efficiently

ordered and highly specific to its immediate environment. Traditional wisdom and elements, such as courtyards, building skins, steps, roofs and gardens have been constantly challenged and re-defined, thus pushing the extent of its currency. SEARCH cultures an ethical, sustainable and purposeful architecture always bearing in mind the needs of the client and constantly exceeding their expectations.



Office Buildings

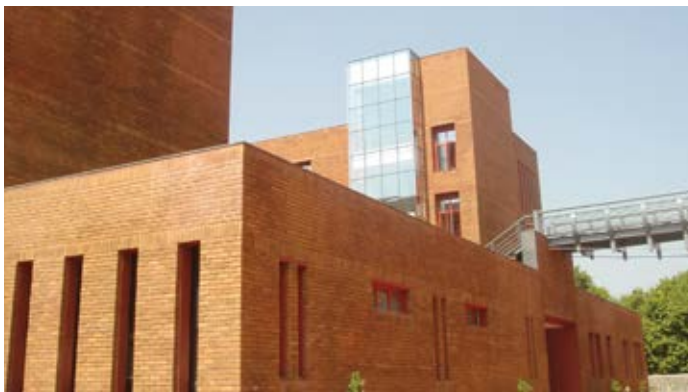


Mixed Use Commercial Kolkata, West Bengal

Cumulative overlays of wide and varying factors in residential design zeroed in on a masterplan. Precise orientation, traffic free recreation spaces , social connectors and a variety of interactive transitional areas intertwined to form a responsible design solution for a housing complex

Size: 35,00,000 sq.ft.

Architecture, Interior Design, Master Planning
Designed, Tender



Lokmat Pune, Maharashtra

The first appearance of a gradual upwardly sloping lawn from where the two bastions of brick emerge may take your breath away. This printing press and office building engage with its landscape, sitting delicately on the site while being firmly rooted.

Size: 200,000 sq.ft.

Architecture, Interior Design, Landscape Architecture
Completed in 2006



Prakash Chemicals Baroda, Gujarat

The design solution was a simple and functional one. Beautifully clad in a locally available stone the façade displayed a formal and functional work environment. Five floors of office spaces with the top floor reserved for management.

Size: 30,000 sq.ft.

Architecture, Interior Design, Landscape Architecture
Completed in 2010



MSC House Andheri, Mumbai, Maharashtra

An office building which was partially constructed needed to be completed and subsequently interior designed to house the companies work force in one single building with allied facilities.

Size: 200,000 sq.ft.

Architecture, Interior Design, Landscape Architecture
Completed in 2009

Highrise living



Mixed Use Residential

Kolkata, West Bengal

A "complex" solution for simple but timeless upmarket living amongst two large natural water bodies in the heart of the City of Joy. Tons of activities encouraging the design philosophy of Live+Work+Play in this large mixed use development.

Size: 35,00,000 sq. ft.

Architecture, Interior Design, Master Planning

Designed, Tender



Ujjwala Housing

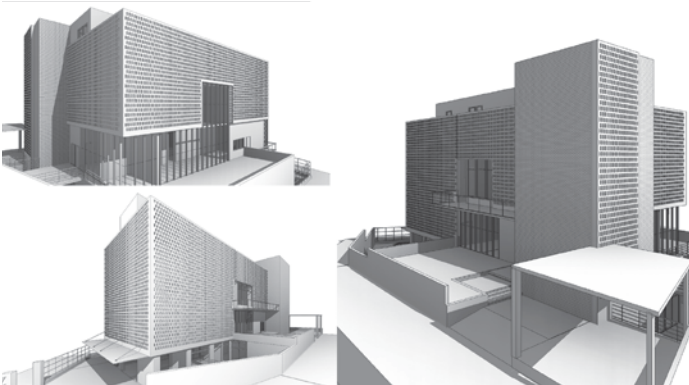
Kolkata, West Bengal

One of our initial mass housing initiatives encouraging large vehicle free pedestrian spaces with a distinct attention to planning plenty of light & breeze to each living space in the premise but retaining an understated elegance.

Size: 700,000 sq. ft.

Architecture, Interior Design, Landscape Architecture

Completed in September 2007



Ruby - Mixed Use

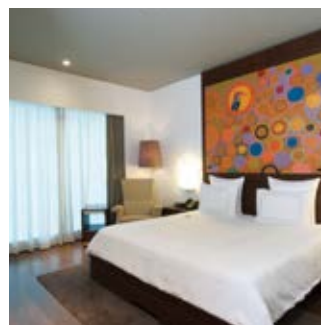
Jalgaon, Maharashtra

An efficient 60 bedded health care facility and an independently accessed private residence neatly wrapped in a monolithic skin to regulate heat gain, dust & noise.

Size: 50,000 sq. ft.

Architecture, Interior Design

Under Construction



Interior Design

Luxury is not a product but a feeling that can be achieved with the simplest of attention to detail, which in turn makes a room feel comfortable. SEARCH embraces this idea of luxury and comfort in every one of its projects, from residences and offices to hotels, spas,

restaurants and bars. By careful activation of all the senses, SEARCH softens the boundary between indoor and outdoor, which stimulates such evolved instincts of taste, love, beauty and happiness, to craft an interior, which feels exceedingly human.



Hospitality



Splash

Rajarhat, Kolkata

This sprawling rooftop restaurant holds its own atop a hotel and a busy shopping mall. The tall pavilions integrated with water and lilies amidst the splash of falling water create a distinct uplifting experience.

Size: 15,000 sq. ft.

Architecture, Interior Design, Landscape Architecture

Completed in 2010



Afraa Lounge

Salt Lake, Kolkata

Overlooking the quaint houses of salt lake this contemporary fine dining restaurant was picked to be represented as the 10 best designed restaurants by a Hospitality Design magazine, New York.

Size: 7,000 sq.ft.

Interior Design

Completed in 2010



Sauravs

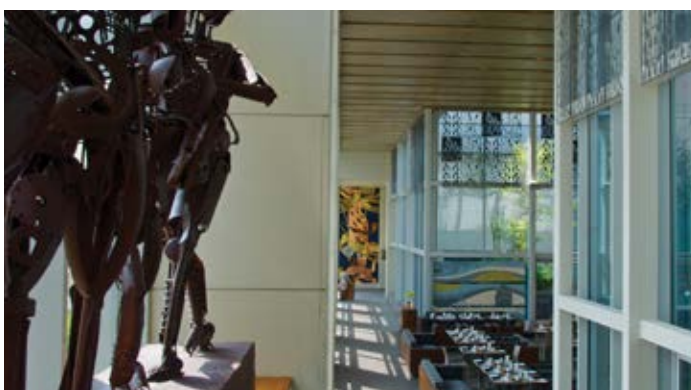
Park Street, Kolkata

The bar and lounge is based on Kolkatas cricket legend Saurav Ganguly. Special effects achieved through various lighting effects transform the space into one that is surreal.

Size: 5,000 sq.ft.

Interior Design

Completed in 2006



Cafe Swiss

Rajarhat, Kolkata

A high ceiling infused with a delicate level of natural light, judicious mix of material, art ad lighting create this celebratory café experience. Artist Shuvaprasanna's ten-armed metal goddess presides over.

Size: 8,000 sq. ft.

Architecture, Interior Design

Completed in 2010



Anaya Spa

Raichak

The design circumambulates a water body. A natural palette of red brick, grey stone juxtaposed with lively colours creates an interesting sequence of experiences. The water courtyard draws you into a very uplifting space.

Size: 30,000 sq.ft

Master Planning, Architecture, Interior Design, Landscape Architecture

Completed in 2012



ODI

Park Street, Kolkata

The restaurant envisages the maximum use of a space to creatively express an interior space many ways. Its rustic yet luxury look created a unique dining experience.

Size: 8,000 sq.ft

Interior Design

Completed in 2006



Afraa

Salt Lake, Kolkata

When it comes to a fine dining experience the attention to detail and the overall evocative quality of design construes its elegance. Exploring light options and experimental materials the restaurant maintains its celebratory appeal.

Size: 4,500 sq.ft.

Interior Design

Completed in 2010



Captain's Deck

Kolkata

True to its theme, navigational maps adorn the walls as wallpaper encapsulating the spirit of adventure in sailing. Beaten copper and brass artifacts from ships complete the décor.

Size: 7,000 sq.ft.

Interior Design

Completed in 2005

Work Spaces



Eco Center

Rajarhat, Kolkata, West Bengal

Very rarely does an architect find a space between a pragmatic solution and an idealistic dream. Sometimes it happens.

Size: 7,600 sq. ft.

Interior Design

Completed in 2013



SREI

Breach Candy, Mumbai, Maharashtra

An office for a financial organization followed its luxurious palette. Luminiscent stone and natural veneers were offset together to create a work space.

Size: 25,000 sq. ft.

Master Planning, Architecture, Interior Design, Landscape Architecture

Completed in 2010



INOX

Mumbai, Maharashtra

The offices were playful and brightly coloured creating a cheerful workspace with ergonomically enhanced furniture; truly responsive to their endeavors in providing entertainment.

Size: 20,000 sq. ft.

Master Planning, Architecture, Interior Design, Landscape Architecture

Completed in 2012



MSC House

Mumbai, Maharashtra

An office building in Mumbai

Size: 85,000 sq. ft.

Master Planning, Architecture, Interior Design, Landscape Architecture

Completed in 2006

Residential Interiors



Sea House

Worli, Mumbai, Maharashtra

An interior for a contemporary condominium, using a sea blue palette and an added luminescence to the house with the use of elegant materials and sophisticated gadgets. This house oozes luxury.

Size: 5,000 sq. ft.
Interior Design
Completed in 2012



Verandah House

Aurangabad, Maharashtra

The quintessential verandah was the inspiration for luxurious outdoor living. A family friendly home filled with an emphasis on the owner's art collection.

Size: 6,100 sq. ft.
Architecture, Interior Design
Completed in 2014



G House

Mumbai, Maharashtra

An apartment that overlooks the wonderful Mahalaxmi race course was refurbished to accommodate the needs of a busy urban family.

Size: 2,000 sq. ft.
Interior Design
Completed in 2012

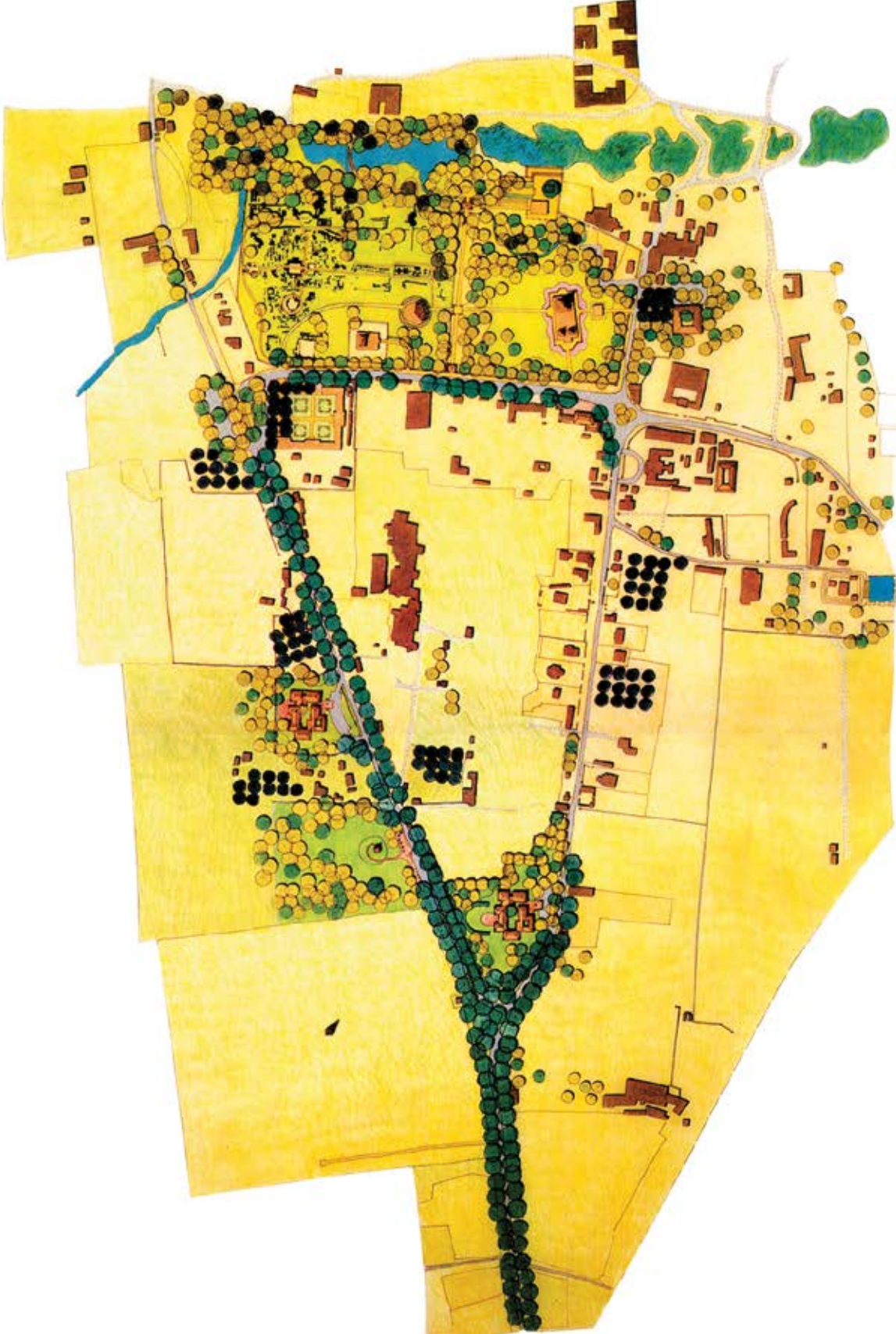


9A House

Mumbai, Maharashtra

Interior design of a significantly spacious apartment in the heart of Mumbai city with a focus on the owner's art collection and traditional roots.

Size: 5,500 sq. ft.
Interior Design
Completed in 2012



Master Planning

Our environment is in a constant state of flux. It is the duty of the master plan to effectively channelize this changeability into a positive potential. SEARCH strives to identify these potentials through layers of investigation that manifest into a vision, which is then refined into

a comprehensive, perfectly executable plan of action. Extensive site analysis, geographic information and programme development exercises have resulted in planned schemes for luxury resorts, places for religious and historical tourism, and industrial campuses.





Master Planning



Mountain Resort

Lonavla, Maharashtra

Set under a historical fort at one end & leaning on a cliff overlooking a large lake on the Deccan Plateau, this master plan for hospitality recreates a rural landscape, in sync with its setting, but having a distinct chic quality.

Size: 18 acres
Master Planning
Designed



ISPAT Industries Ltd

Mumbai, Maharashtra

Establishing the environmental policy for horticulture, and masterplanning for a brown field landscape in a Steel plant. Reestablishing a green park in slag filled area.

Size: 500 Hectares
Master Planning, Landscape Design
Designed



Thermal Power Corporation India Ltd

Nellore, Andra Pradesh

We were hired to design a Masterplan for creating a road network, zoning plan, housing and ancillary functional areas of a large Thermal Power plant in Nellore.

Size: 200 Acres
Master Planning, Achitecture, Interior Design, Landscape Architecture
Designed



Greenlink

Mumbai, Maharashtra

A proposal for Mumbai that creates a pedestrian linkage plan alongside an open space network.

Mumbai Metropolitan Region
Master Planning
Designed



Houses



Munim House

Alibaug, Maharashtra

Oriented to maximize year round breeze; comfortable temperatures, protection from the fierce monsoon and a joyous feeling of living with the elements inside the house establish a true engagement between the house with its environment.

Size: 8,500 sq. ft.

Architecture, Interior Design, Landscape Architecture
Completed in 2014



Chhabra House

Bhusaval, Maharashtra

A traditional home in its original context is the optimum condition for beautiful design. Chhabra house is a courtyard house designed for a family with an active social lifestyle. This house creates spaces that embrace life and myriad ways of expression.

Size: 6,300 sq. ft.

Architecture, Interior Design, Landscape Architecture
Completed in 2008



Salecha House

Jalgaon, Maharashtra

Much like the traditional brick houses with Mangalore tiles in this region of Maharashtra, this house is quintessentially intrinsic. It is unassuming yet sophisticated. The clients describe living in it as a cosmic experience where the drama of the sun, wind and nature play a seamless role.

Size: 6,500 sq. ft.

Architecture, Interior Design, Landscape Architecture
Completed in 2001



Veranda House

Yavatmal, Maharashtra

A large home with a variety of spaces for entertainment, celebration and family life. Traditional in its planning and space orientation, it has Kerala mural art adorning the family space, while most rooms overlook the large lawns. The emphasis on the veranda becomes apparent at the periphery, between the room and the large lawn; a place for maximum living concentration.

Size: 10,000 sq. ft.

Architecture, Interior Design, Landscape Architecture
Completed in 2014



Retail Entertainment Design



Elpro

Pune, Maharashtra

A retail & entertainment high street arrangement for a bustling and demanding City. We focussed on letting visitors feel the outdoors and experience a "day out in the park" while addressing visual mapping for its commercial goals.

Size: 700,000 sq. ft.

Architecture, Master Planning, Landscape Design, Interior Design
Designed



Shangri La

Guwahati, Assam

Designed on a prominent artery of Guwahati, this mixed use development contains retail, workspaces and a 150 key star hotel, co-existing in independent harmony, but closely integrated to each other as a single homogenous unit.

Size: 10,00,000 sq. ft.

Architecture, Master Planning, Landscape Design, Interior Design
Designed



City Center New Town

Rajarhat, Kolkata, WB

The City Centre in Rajarhat wanted to be an inclusive public space in a New Town. One that creates pride within the community - It is a 50,000 sq ft shopping experience that represents an emerging downtown.

Size: 900,000 sq. ft.

Master Planning, Architecture, Interior Design
Completed in 2009



Hotels & Hospitality



Swissotel

Rajarhat, Kolkata, West Bengal

The Swissotel in Kolkata is a business hotel. 147 rooms, 3 restaurants and a bar, health club, a rooftop pool and grand banquet halls. The fine arts and crafts of West Bengal find a befitting tribute in its interior expressions.

Size: 250,000 sq.ft.

Master Planning, Architecture, Interior Design, Landscape Architecture
Completed in 2010



Downtown Business Hotel

Lucknow, Uttar Pradesh

Facing a busy road, on a small site in the city of Lucknow the hotel has 120 rooms, 3 restaurants and bar, roof top swimming pool and spa.

Size: 150,000 sq.ft.

Architecture, Interior Design, Landscape Architecture
Designed



Tea Resort

Kursoeng, Darjeeling, West Bengal

Tranquil environs of the famed Makaibari tea estates form the backdrop to a group of tea chalets with varied room sizes, cluster together as a boutique hotel to celebrate Tea.

Size: 150,000 sq.ft.

Master Planning, Architecture, Interior Design, Landscape Architecture
Designed

Work Strategy



Concept and
Ideation



Exploration
and Design



Accuracy and
Projection



Implementation



Realisation

Conceptualization

Creating a distinctive sense of 'place' is the core guiding principle. This idea is carefully applied to all the projects, especially at the stage of conceptualization. The principal architects temper their observations and inferences and guide the team through the feasibility of certain concepts and chart out a path toward a beautiful architecture, with these notions of place as a guiding light. It is this crucial stage of development that infuses nuances of comfort, luxury and happiness within the built spaces.

These ideas are represented to the clients through varied media. Sketches, artist renditions, views and three-dimensional imaging ensure a detailed and comprehensive understanding of the proposals.

Time Line

The duration and time taken to deliver various items needs to be ascertained at the outset of the project for smooth operations. With a thorough knowledge of the time constraints, and other human resource issues in getting the project completed on time, we oversee the completion on time. Towards the finishing stage of the project we can position key interior designers on the site to ensure precise supervision.

Quality Assurance

Nothing can be more assuring than a repetitive client, of whom we proudly have several. Having completed our most recent commercial project – City Centre New Town, Kolkata, we invite you to survey the premises.

Costing

Project material sourcing is the key to the success of the project. Costs play a key role in whether an idea can be implemented or not. Understanding this aspect completely, we delve deep into 25 years of resourcefulness to seek newer and better options.

Exclusive Design Team

We maintain a core design team that is working exclusively on each project typology. The team is a diverse composition of architects and interior designers, aided by draftsmen and three-dimensional artists. The strength of this team is controlled and selected depending on the size and nature of the project.

Material Sourcing

We have in the past sourced the best material whether it is furniture, lights, metal work, woodcraft, carpets or art at competitive prices. Our strength here lies in bringing out the best in Indian craftsmen thereby reducing costs substantially and adding to the labor-intensive philosophy of Green India.

Vendor Sourcing

We are associated with some of the best talent when it comes to craftsmen, carpenters, electricians, plumbers and associated field work force. We specify the project in a carefully worked out manner to assist in seeking the best contractors. An item rate specification and quantity document ensures that we keep within the budget.

Design Laboratory

Studio space within the office acts a designated laboratory and workshop for all kinds of product design. Actual samples, colors and designs are made here and presented to the Client as and when necessary. The design process is always questioning the possibility of new ideas and different ways of experiencing simple things.

Accolades published articles

Design Excellence in Architecture and Interior Design
Society Interiors Design Awards – 2014

National winners in design Coffee Shop & Bar/Pub categories
Hotel & Food Service – Design Awards 2000

For excellence in Hospitality Design
Indian Institute Of Interior Designers Award 1999

Second prize for all India design competition - 1995
Indian Institute Of Technology, Guwahati, Assam Master Plan.

Design competition held in Orlando, Florida - 1985
American Society For Landscape Architecture - Merit Award

Second prize for all India design competition - 1985
International Federation Of Landscape Architects (Ifla)

25 Masters of Indian Architecture
2011 Book by ITP Publishing India Ltd

Bombay Gas Company Office
September 1991–Indian Architect & Builder

The Bombay Gas Company
January 1992 – Inside Outside

Restoring the Old and Beautiful
March 1995 –The Fountainhead

Orchestrating Space
April 1997 – Inside Outside

50 Years of Nation Building
August 1997 - Indian Architect and Builder

Hotel Design – Fortified Retreat
December 1998- Society Interiors

External Expressions
November 1998 - Indian Architect & Builder

Different Strokes
November 1998 - Indian Architect & Builder

An Ingenuity Of Expression
January 2000 – Inside Outside

A Tale of Two Homes
July - 2001 – Inside Outside

Landscape Enduring Outdoors
July 2002 – Construction World

Big Is Beautiful
December 2004 – Design & Interiors

Professional Perspective
November 2004 – Construction World

Saurav's
April 2005 – Indian Architects & Builders

In the middle ground...of nature & industry
May 2005 – Indian Architects & Builders

Follow The Light
November 2008 – Better Interiors

Night and Day
April 2009 – Hospitality Design

Budding Design
April 2009 – Society Interiors

Alternate Homes
February 2009 –Index Furniture Journal

Greenlink Mumbai
February 2009 – Lokmat

Maximising Design
June 2009 – CW interiors

Interior Excellence Award
May 2009 – Lokmat

Happenings
May 2009 – Society Interiors

A Story of Design – Residence & Lokmat
October 2009 Home Review

The Art of Precision
May 2010 – Better Interior

Sea and Sand
October 2010 – Inside Outside

Verandah House
November 2010 – Inside Outside

Striking the Right Balance
June 2012 – Index Furniture Journal

The Mumbai Greenlink Project
December 2013 - Index Furniture Journal

Precise Plans
January 2014 – Society Interiors

Clients



We have aged; since **1990**, with **69.372** man hours of work, **530** designers, **62** expert advisers and **56** clients, we have envisioned **115** homes, **45** work spaces, **26** bars & restaurants, **4** hotels, **16** apartment buildings, **8** commercial buildings, **3** malls, **11** entertainment centres, **3** institutional centres; planned and landscaped **4** industries, **1** power plant, **1** steel plant and **3** places of religious importance, that is **24.000.000 sq.m** of designed space, spread over **40** cities in **3** countries from offices in **2** cities, Mumbai and Pune, with **1** coherent vision.

SEARCH

STUDIO FOR ENVIRONMENT & ARCHITECTURE

601, Lodha Supremus, Senapati Bapat Marg, Mumbai - 400013
2 Lingfield Plaza, Clover Village III, Salunke Vihar Road,
Wanowrie, Pune - 411040